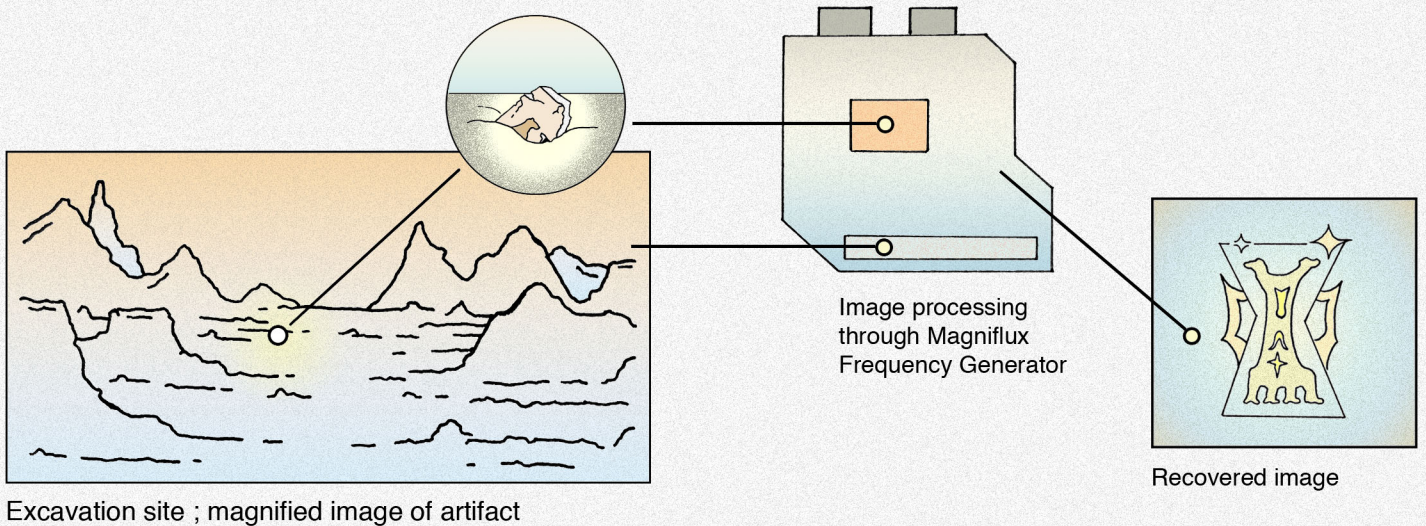


O.I. Research Partners is a fictional organization of researchers who has access to frequency tapping devices.



The Magniflux Frequency Generator is one of the earliest developments. It is key to accessing the rare audio from the dimension of Speed Milk. Each recording is carefully restored to give a reflection of an advanced civilization adjacent to ours.

'Stage Warmer' is the introductory track into the fast paced loop of Speed Milk.

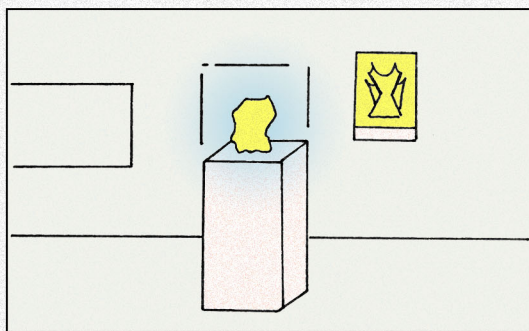


Exhibit 1.1

There will be an upcoming album and exhibit as a full presentation of the completed research.

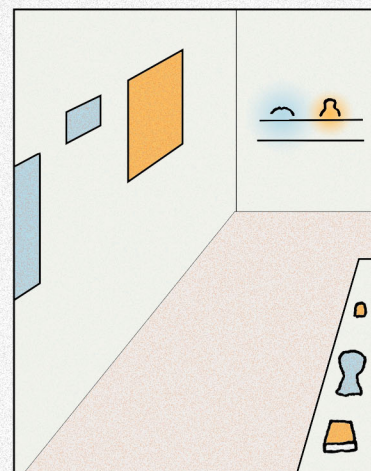
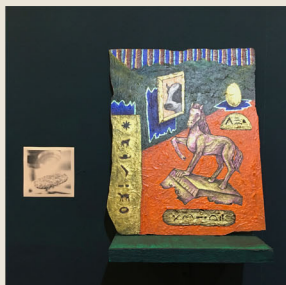
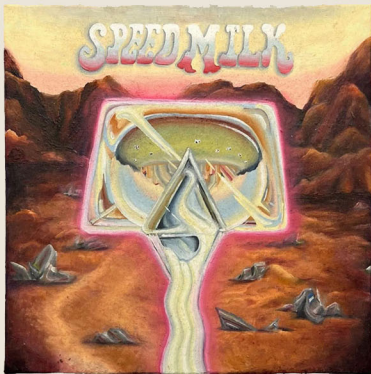
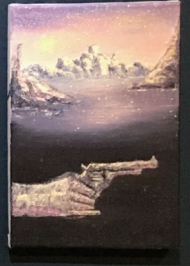


Exhibit 1.2

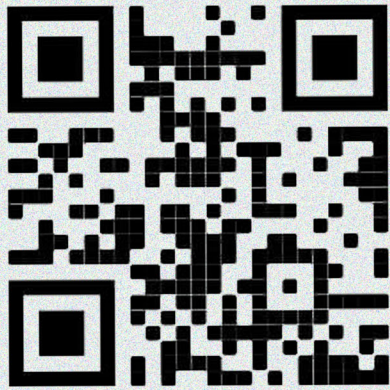
SPEED MILK

EXHIBIT





SPEED MILK FULL ALBUM



Research
Partners



SPEED MILK The Musical
(full album)

O.I. RESEARCH PARTNERS' CUTTING-EDGE STUDY UNLEASHES A SONIC TRANSMISSION FROM THE INTERSTELLAR LAND OF MILK



NUEVA ECIJA, 1997 - *The Land of Milk is the name, and speed milk is the game.* For the first time in the public eye, the O.I. Research Partners published findings that reveal a glimpse of a universe populated by cowboys, intergalactic dairy secretions, and non-Euclidean ranches. The raw data in the form of thirty-one minutes of audio released by the group, is currently being distributed in libraries and record stores across the Philippines.

Accompanying the audio recordings is a publication featuring the facsimile auto communicator used by the inhabitants of *The Land of Milk*.

The source transmissions emanated from the yet undisclosed coordinate where Speed Milk is hypothesized to be situated, somewhere off the distal appendage of Equuleus. These were notated in the O.I. Researchers' publication as a collection of glyphs, lying in the uncanny valley between the anthropomorphic and metaphorical.

The United Space Technologies Research Alliance, the Etudes de Télédétection Spatiale, and the Saharan Remote Sensing Center have since expressed, on multiple occasions, interest in participating and funding the group's research. The O.I. Research partners have refused to respond to or even acknowledge their correspondences, which is no new development, considering their elusive and hermetical mode of operation since their public appearance at the Banahaw Symposium of Exogenesis Studies in 1979.

While the Hubble Space Telescope, Chile's Observatorio del Pangué, and CERN's Large Hadron Collider are commonly mentioned as revered scientific instruments that probe the known observable universe, the O.I. Research Partners' *Magniflux Frequency Generator* had long been the subject of fascination by the international scientific community after the late philanthropist and eccentric Dr. Zera Cornelius bequeathed their entire estate to the research endeavor. The amount is rumored to be around \$25B USD, which is astounding in comparison to the Apollo 11's budget of \$22B USD in the 1960's.

What is known about the *Magniflux Frequency Generator* is that is process that utilizes esoteric attunement to frequencies to pierce into alternate dimensions. It has yet to be confirmed if this dimension may overlap with our present, or may exist in our past or future. In their first round of study, however, the results are a series of recordings hinting at The Land of Milk, and how its entire ecosystem of sentient beings are dedicated to the pursuit of the ever-elusive, yet alluring dairy product.

The nature of this Speed Milk, whether it is an actual substance or something else entirely, has yet to be confirmed.



The identity of the O.I. Research Partners remains a mystery, though their laboratory is rumored to have been situated in the flatlands of Nueva Ecija, Central Luzon. This location had been triangulated by the average location from which the researchers have transmitted telegrams to their small circle of colleagues and peers whom they maintain communication with.

The author of this article expresses her gratitude to Dr. Luzviminda Kalawakan, through whom this publication was able to reach out to the O.I. Research Partners to receive this brief, yet illuminating statement: ***O Mother Rancher / Stir a miracle. / Lead me to pastures / Of the great unknown.***